

DRAWING NUMBER
20-9

PALM ACRES ESTATES ADDITION NO. 2

A SUBDIVISION IN SEC. 5 - TWP. 44 S. - RGE. 43 E.
PALM BEACH COUNTY, FLORIDA

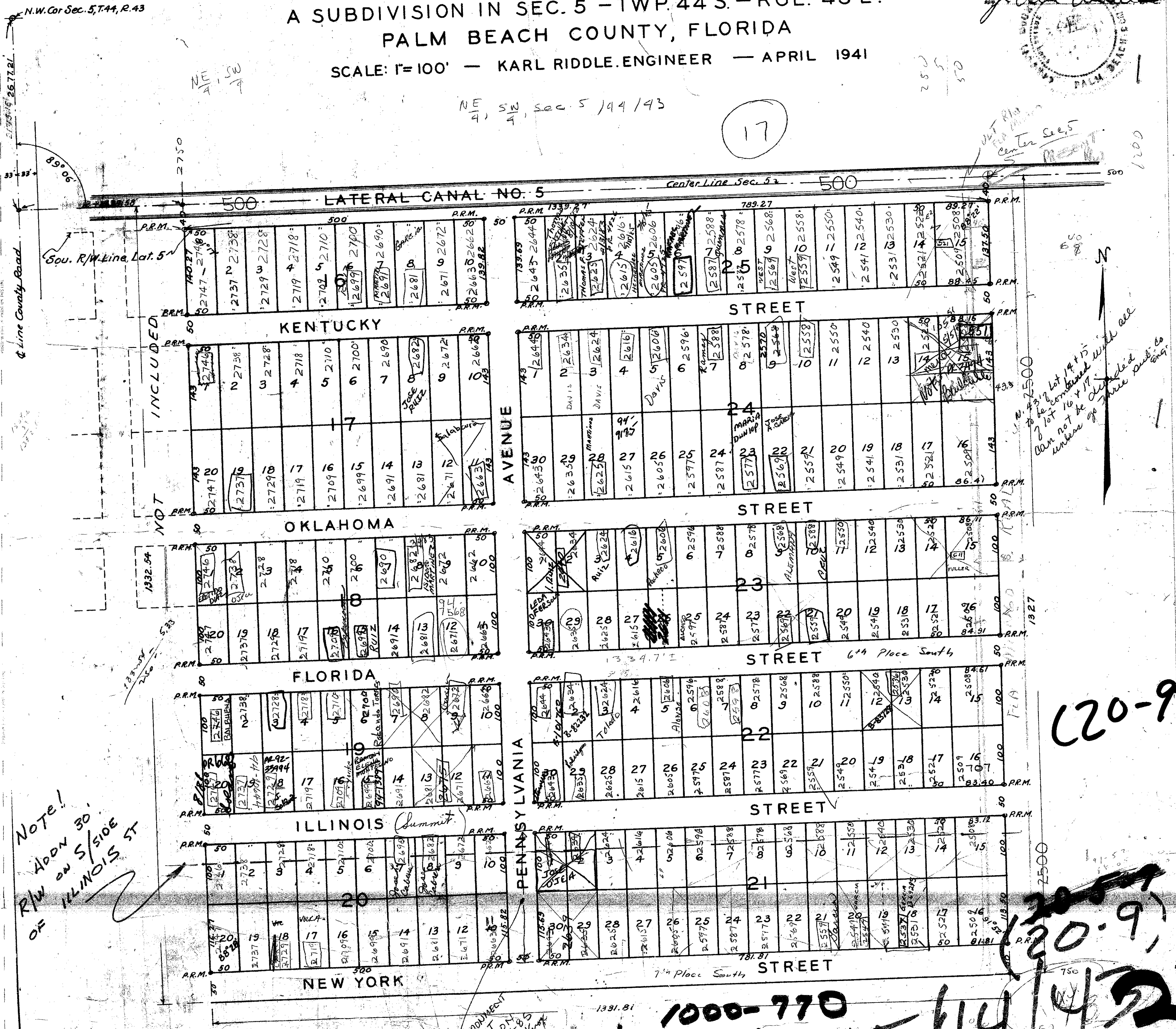
SCALE: 1" = 100' — KARL RIDDLE ENGINEER — APRIL 1941

STATE OF FLORIDA
COUNTY OF PALM BEACH
This Plat was filed for record at 10:30 AM
this 9th day of May
1941 and duly recorded in Plat Book No.
80 on page 17
I, *Karl Riddle*
Recorder of Deeds, Palm Beach County, Florida



NE 1/4, SW 1/4, Sec. 5, 44 / 43

17



DRAWING NUMBER

DRAWING NUMBER

DRAWING NUMBER

Note!
R/W Above 30'
on S/SIDE
OF ILLINOIS ST

Center Sec. 5
N 27.500
to be combined with all
of lot 16 & 17
can not be divided
unless go thru out to
400'

REVISIONS
REVIEWED BY
REVIEWED BY
REVIEWED BY

1000-770

~~1000-650~~ 544/42

(20-9)

(20-9)

1000-770